



Dining area & Mezzanine



Lounge Mezzanine



Backwash sink



Hair, makeup and styling room

Located at our new extended campus on Brewery Road, Studio 09 offers a total shooting space of 1,250 sqft.

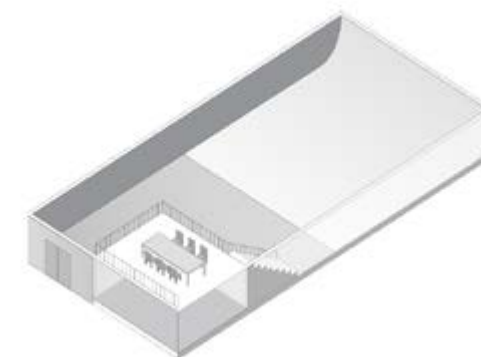
The lounge and dining area is located on a mezzanine which looks out on to the cove. The hair, makeup and styling room is self-contained within the room that sits below the mezzanine.

Total area:
223 sqm / 2,400 sqft

Ceiling height:
6.10m / 20ft

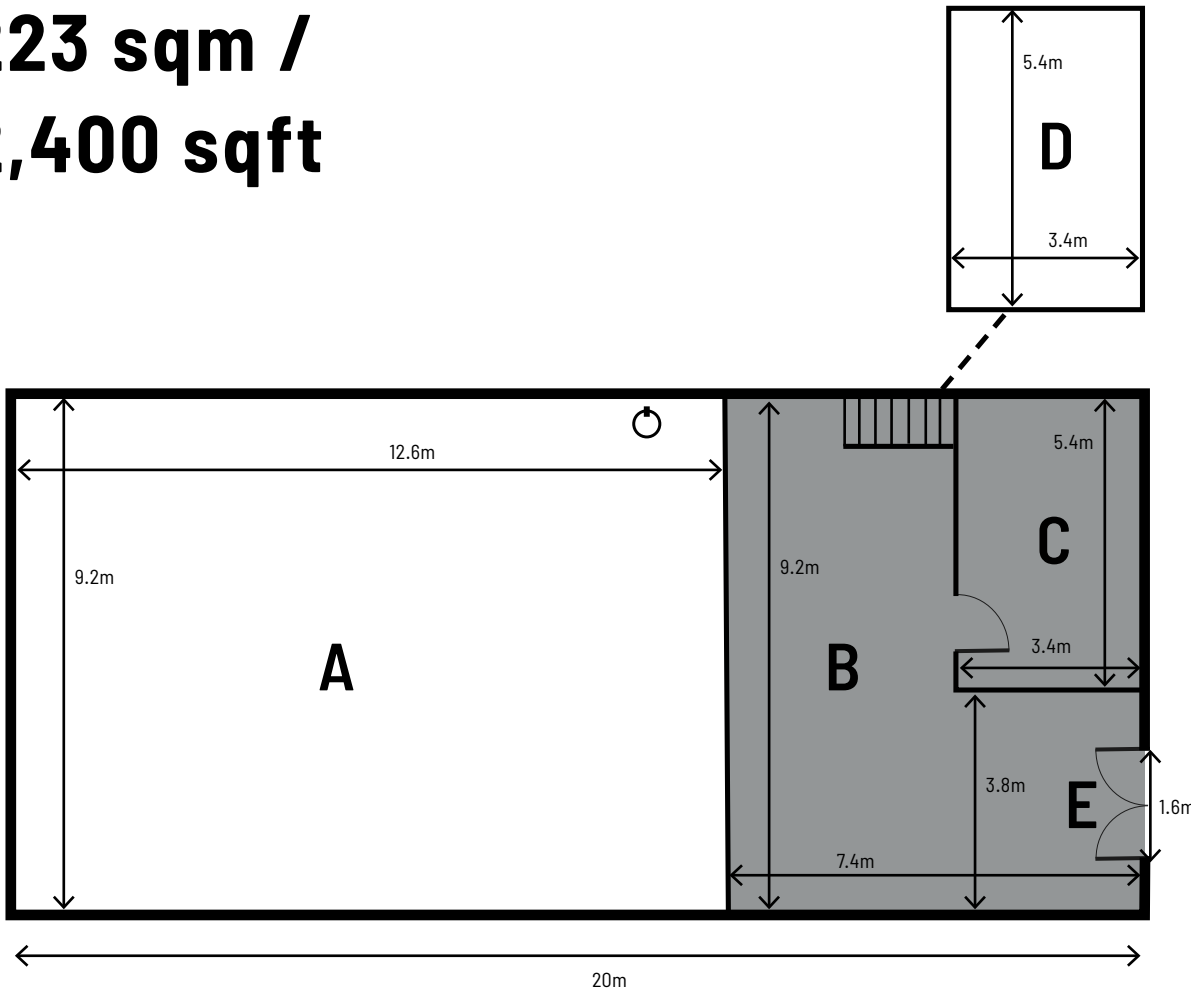
Cove width x depth x height:
9.5m / 31ft x 12.5m / 41ft x 6.1m / 20ft

See floorplan below for further info



Studio 09

223 sqm /
2,400 sqft



- A Cove**
Total area: 116 sqm / 1250 sqft
Ceiling height: 6.1m / 20ft
Deep: 12.5m / 41ft
Wide: 9.5m / 31ft
- B Lounge Area**
Total area: 50 sqm / 538 sqft
- C Hair, Makeup & Backwash**
Total area: 18.3 sqm / 197 sqft
3.4m x 5.4m / 11ft x 18ft
- D Dining Mezzanine**
Total area: 18.3 sqm / 197 sqft
3.4m x 5.4m / 11ft x 18ft
- E Studio Door**
width x height: 1.6 m x 4.4m
- Power**
3 x 63 amp single phase outlets